



**Foot Locker**  
45<sup>TH</sup> ANNIVERSARY

PRESENTED BY **HOKA**

Athletes, Coaches and Parents,

We are 1 week out from this 2nd running for Foot Locker Northeast Championships at Franklin Park. The meet staff and volunteers are all looking forward to hosting another incredible event. This email contains some last-minute things we want to communicate

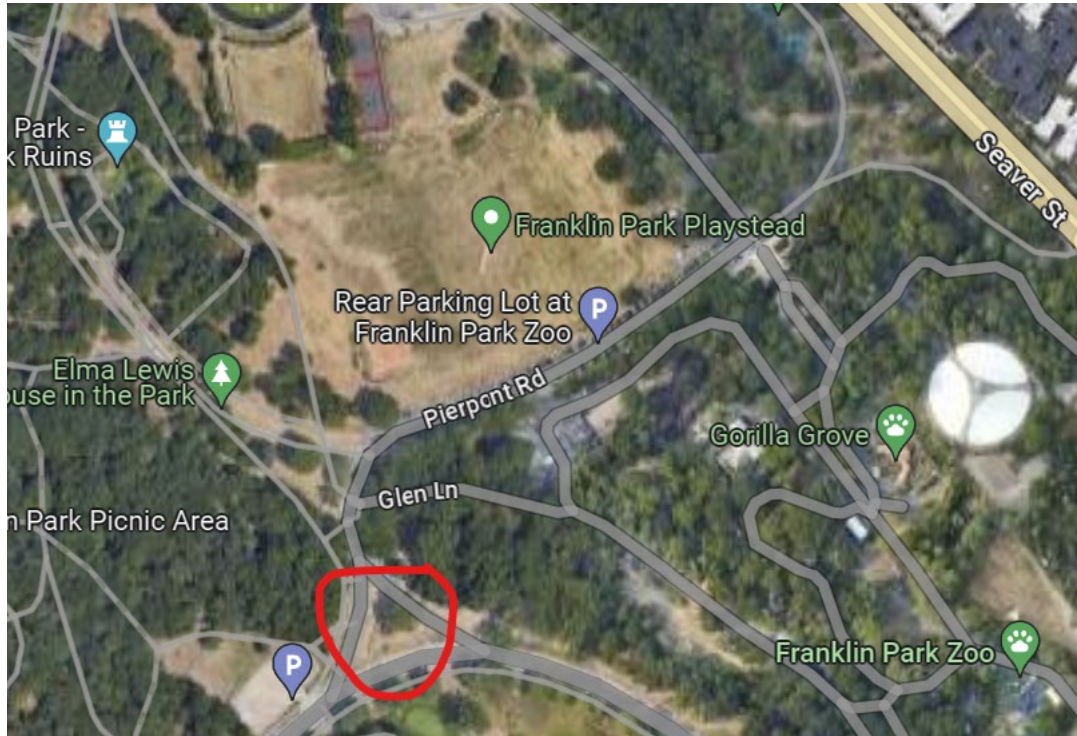
- **Parking** – If you do decide to park near Franklin Park, please park in designated spots. There will be accessible parking near the course but this may fill up. Using public transportation to Forest Hills is the only way to ensure parking without a long walk.
- **Shuttle from Forest Hills MBTA** – We will have 2 shuttles running all day long from Forest Hills to the clubhouse (packet pick-up) and the course. The walk from the clubhouse to the course is about 7 minutes. See map below for shuttle pick up locations. The stop at Forest Hills is NOT on the upper level. You must go to the Hyde Park Ave side of the station.
- **Drop Off** – there is a drop off located at the Valley Gates. *See below map for location.*
- **Entries** - Online entries will shut down Sunday, November 24 midnight. After that, the only time to register is Friday, November 29th from noon – 5pm at the Franklin Park Clubhouse – 1 Circuit Drive. Fee is \$60. **There is no race day registration.**
- **Course Preview** - Directional signs will be in the form of arrows (stars) on the ground which will be in place no later than 11 a.m. on Friday. There will be a Course Run with Katie Wasserman and Billy (The Toad) at 1:00pm on Friday. Everyone is welcome to join them.
- **Packet Pick up** –
  - There will be a line at packet pick-up. If you are arriving on Saturday, please arrive 2 hours prior to your race in order to get your picket and have time for warm-up. It is a 10 minute walk to the course.
  - Bib number and backpack pick up will be at the Franklin Park Golf Course, 1 Circuit Dr, Dorchester, MA 02121.
  - Head into the building and turn left
  - Packet pick up will be from 11:30am - 5pm on Friday
  - 7:30 a.m. until noon on Saturday.
- **Information Tent** – Will be located prior to the entrance to the course. This is where lost and found and lost child pick up will be.
- **Course Map** – [Click Here for 5k](#). [Click Here for 3k map](#). Note that the “3k” is 1.93 miles or 3100 meters. It follows the 5k course and ends just prior to coming up on the 2 mile marker.
- **Medical** – We will have a medical tent just past the finish line with 3 athletic trainers. They will be available on Saturday only for any needs like taping, ice etc. If you need assistance, please let the security nearby know and they’ll let you in. There will be a tail end Gator with an EMT as well as Boston EMS with an ambulance. There are course monitors spread throughout the course. If a runner goes down please notify the first monitor you see so they can radio into our EMS team.

- **GEAR and SWAG** - Foot Locker NE24 swag sales at the **Athlete Village on the course** .
  - Foot Locker Retail Hours:  
Saturday: 7:30AM- 11:30AM
  - *Credit cards accepted*
- **Pennants** – we realize that there is a tradition of athletes taking the course pennants for mementos. That’s great. We anticipate buying new ones each year. However, we ask that you wait until after the end of the 1:15pm race to rip them off. Thank you 😊
- **Hoka Fan Zone** - Hoka will be having a very entertaining Fan Zone located near the Athlete Village.
  - They will have the Crescendo spike to demo with free socks to those who try them on.
  - There will be many giveaways to include arm warmers etc.
  - Friendship bead station
  - Course map poster give-aways (that includes Bear Cage Hill this year)
  - Katie will be signing the posters for the runners.
  - Display of new track spikes
- **Performance Equivalent** - See what your time at Franklin Park would be (its equivalent) on 21 other YOURTIME+ rated courses around the country, and where you placed among over 40,000 performances on them at:  
[YOURTIMEPLUS.COM](http://YOURTIMEPLUS.COM) Shows you things you automatically know from results in track but couldn’t know in cross country.....UNTIL NOW!
- **Live Results** – [CLICK HERE](#)
- **Post Race** – Please keep moving through the chute and around to the exit. Parents and coaches will not be allowed into the area behind the softball backstop. Please wait on the other side of the barricades for your athlete.
- **Clean Up** – Leave it cleaner than you found it. Please deposit all trash in the nearest trash can. If a bin starts to fill up, please alert a staff member.
- **Awards** – will be going 15-20 minutes after each race at the platform in the Athlete Village. Please make your way if you’re in the top 30. Remember 11-12 and 13-14 EACH receive top 30 awards.

The field is shaping up to be memorable with the majority of the top individuals vying for a trip to San Diego, California. All Fields will be posted on the website when registration closes (November 24):

[Footlockercc.com](http://Footlockercc.com)

If we have additional last-minute information, it will come via email. As well, if there is urgent information about the meet, it will be communicated by our announcer at Franklin Park and via email.



Forest Hills Stop – In the public U Turn area.



Golf Course – now in the adjacent Zoo parking lot. – Please don't park for entire race there.

